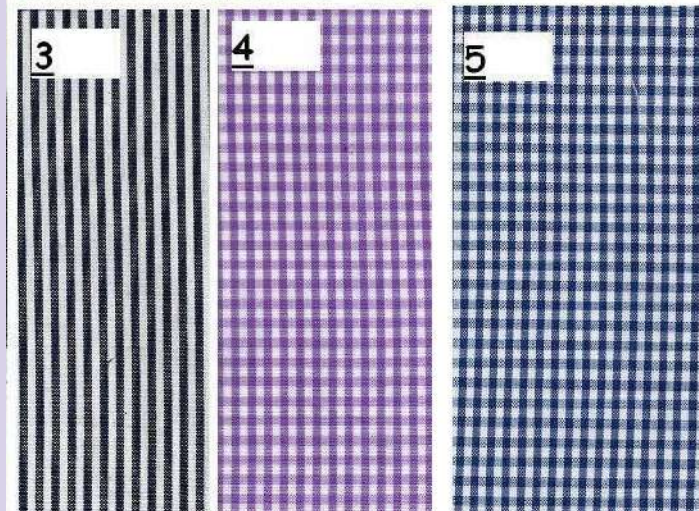
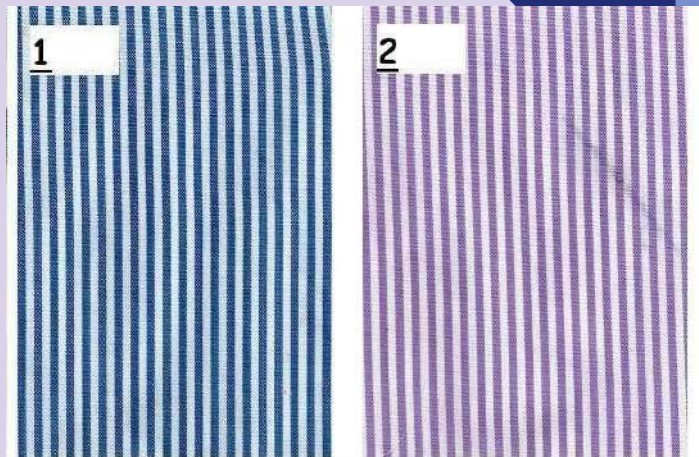




CONFECCIONES MORÉ

INVIERNO 2023

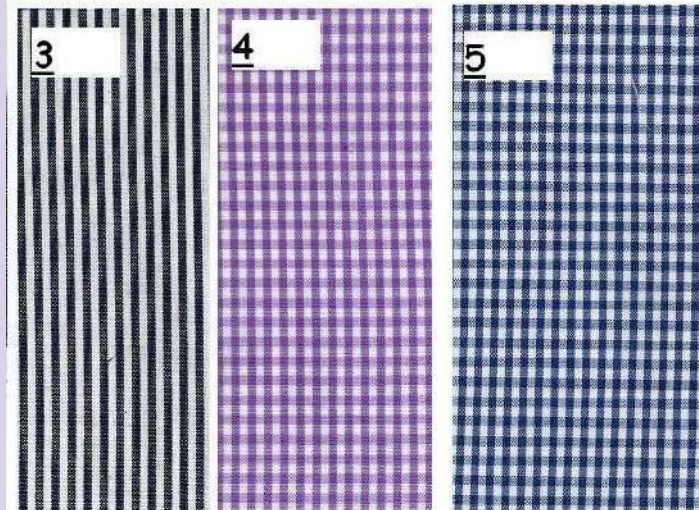
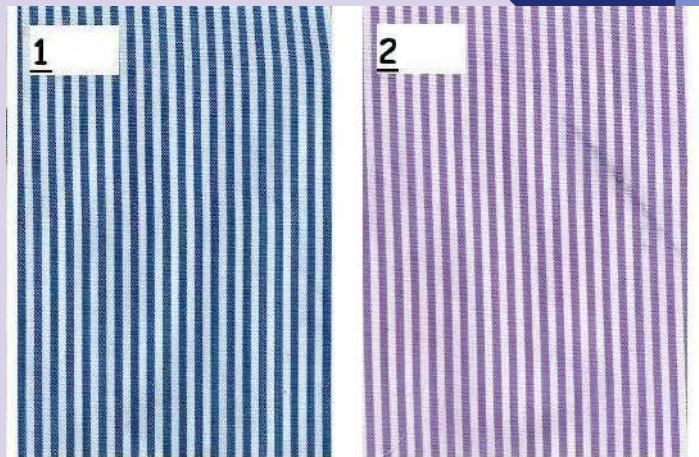


MODELO 885

**BATA MANGA
LARGA**

COMPOSICIÓN
70 % POL.
30% ALG.

TALLAS
P M L XL XXL

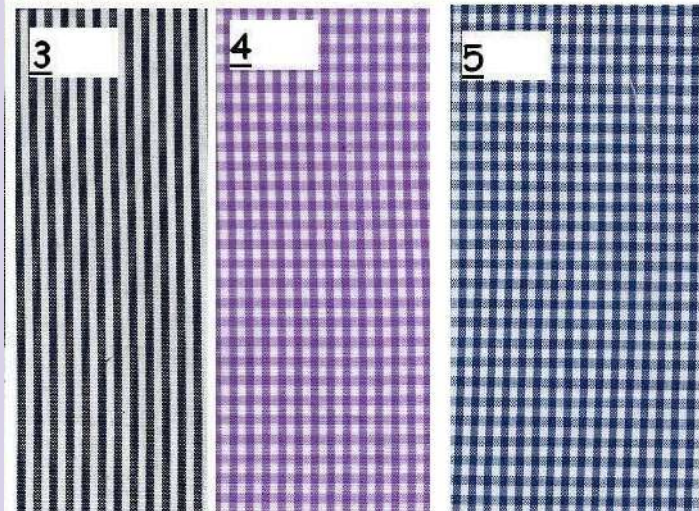
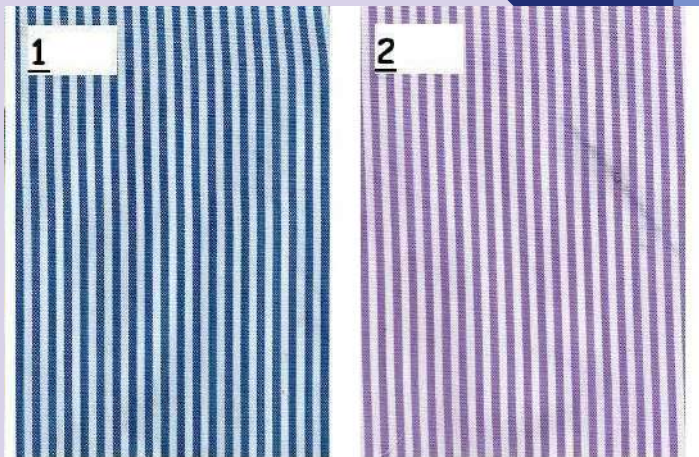


MODELO 883

**BATA MANGA
LARGA**

COMPOSICIÓN
70 % POL.
30% ALG.

TALLAS
P M L XL XXL



MODELO 838

**BATA MANGA
LARGA**

COMPOSICIÓN
70 % POL.
30% ALG.

TALLAS
P M L XL XXL



MODELO 840

**BATA MANGA
LARGA**

COMPOSICIÓN
70 % POL.
30% ALG.

TALLAS
P M L XL XXL

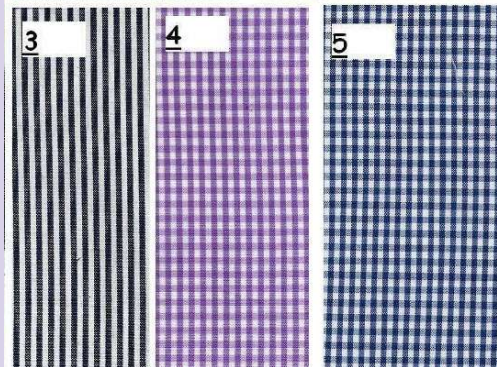
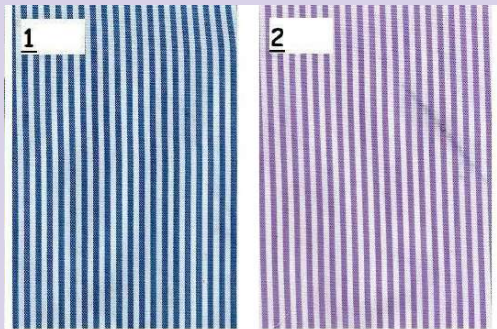


MODELO 836

BATA MANGA LARGA

COMPOSICIÓN 70% POLIÉSTER 30% ALGODÓN

TALLAS 44 A LA 64



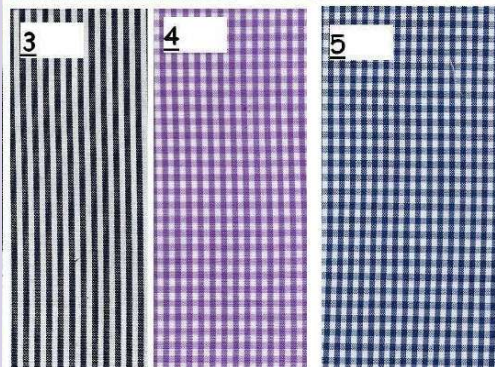
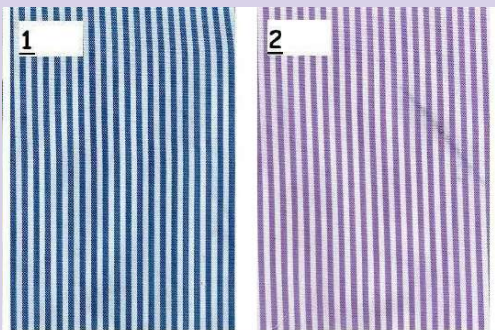


MODELO 865

BATA MANGA LARGA

COMPOSICIÓN 70% POLIÉSTER 30% ALGODÓN

TALLAS P M L XL XXL





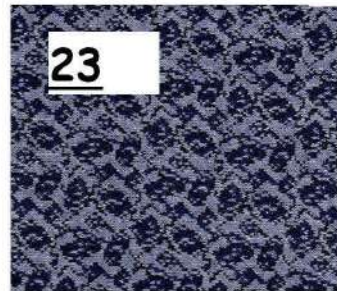
20



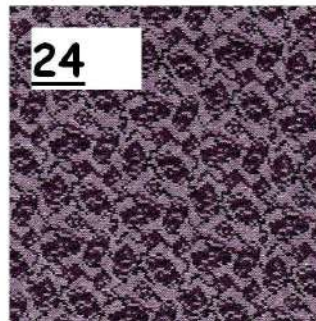
21



22



23



24



25

MODELO 863

**VESTIDO
PUNTO MANGA
LARGA**

**COMPOSICIÓN
50% POL.
50% FIBRANA.**

**TALLAS
42 A LA 64**